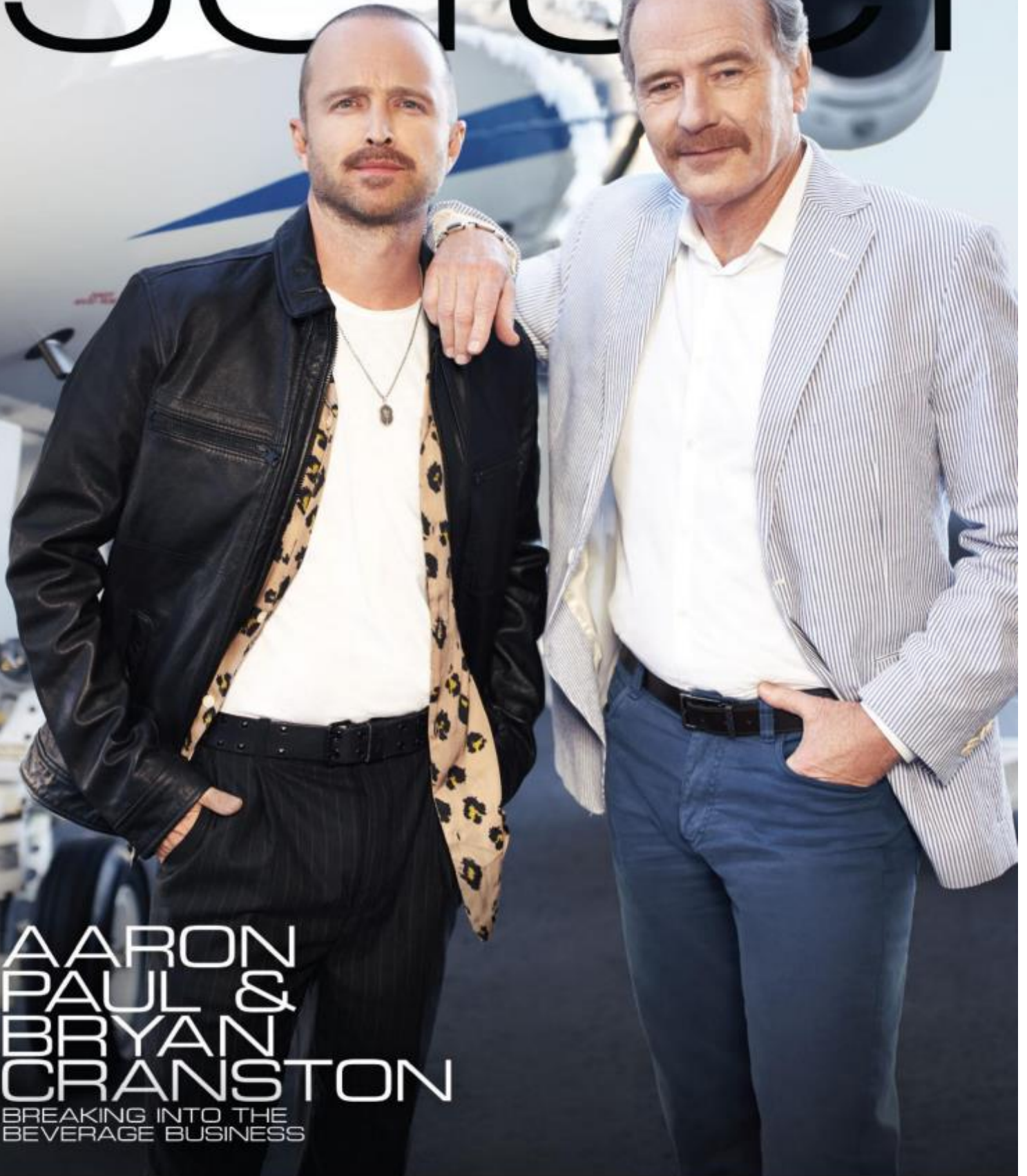


ISSUE 2 · 2023

THE AFFLUENT LIFESTYLE MAGAZINE

Jetset



AARON
PAUL &
BRYAN
CRANSTON

BREAKING INTO THE
BEVERAGE BUSINESS

Takeoff // The Sport

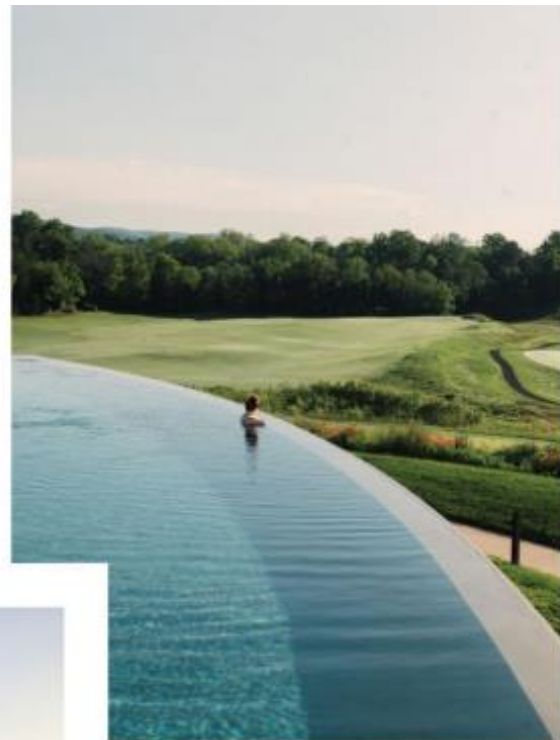
STAY & PLAY *Destinations*

LUXURIOUS LINKS WELL
WORTH THE TRIP

By Toby Thompson and Si Si Penalosa

Looking to explore bold, new golf frontiers this summer? Take a gander at these simply magnificent golf courses to up your game, all while delivering a compelling travel experience in spades. At *Jetset*, we revel in our golf obsession—from the latest and greatest equipment advancements, to rewatching classic Masters moments, to the best craft brews on tap at the clubhouse. For us, and over 50 million golfers around the world, it's a thrilling prospect to discover a new gem hidden in the distinguished global landscape of this game.





KESWICK HALL

Keswick, VA // keswick.com

Golf insiders rejoiced when Keswick Hall recently reopened after a four-year closure and thrilling top-to-bottom renovation. With the reopening, Keswick Hall invites guests to experience the refreshed, award-winning golf course, brand-new spa, sparkling infinity pool, 80 sumptuous guestrooms and suites, and a culinary program overseen by Jean-Georges, including Marigold by Jean-Georges. Full Cry Golf Course, one of the last courses that the brilliant Pete Dye created, is consistently rated as one of the best in the nation. The 18-hole, award-winning layout combines the undulating geography of central Virginia with contemporary golf course architecture. The nearby Blue Ridge Mountains provide a picturesque background for the tough course, strategically created for golfers of all skill levels to enjoy themselves.

Pete and Alice Dye's renovations to an existing Arnold Palmer course at the 600-acre boutique Keswick Hall resort opened in 2014—garnering a ranking inside *Golf Digest's* top 20 in Virginia ever since. The Dyes' minimalist design offers options off the tee and open approaches to run balls onto greens if desired, but challenges golfers

who are off line with difficult, small bunkers. With holes short and long, the course is varied and the conditioning is always excellent. The par-4 sixth hole is fantastic and challenging, and the finishing holes of 15–18 are among the best and most challenging in the state. This makes up for the significantly easier stretch of holes that are located around the turn and during the opening half of the back nine. And to think all of this gorgeousness is situated just outside of Charlottesville on a tranquil parcel of land with simply smashing mountain vistas.

Keswick Hall has been known for elegance, luxury, grandeur, and a sense of peace in the Virginia countryside since 1912. The iconic resort has taken on a new role today, combining classic sophistication with luxurious, modern-day comfort. In addition, Keswick Hall has a farm that supplies fresh veggies, grass-fed beef, honey from the apiary, and other ingredients to the restaurant. At Keswick Hall, Southern Hospitality meets contemporary luxury touches, culminating in a sumptuous hideaway with a deeply ingrained sense of authenticity and place.

The building, which was originally built for the Crawford family in 1912, has gone through various owners and has lived as a country club, an Orient-Express hotel, and Sir Bernard Ashley's residence—the husband and business partner of fashion designer Laura Ashley. Robert and Molly Hardie, the current owners, acquired the property in 2017 and soon after started a complete refurbishment with the intention of modernizing and enlarging the old building.

